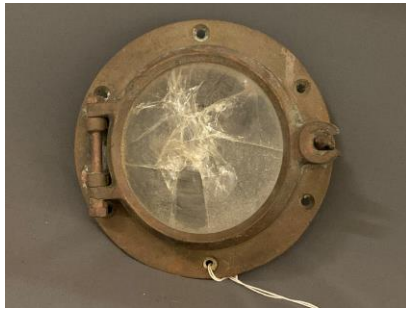




Seaside News



Wreck of E. M. Clark



Built in 1921, *E. M. Clark* was a twin-screw tanker that ran crude oil between the Caribbean and the Gulf of Mexico to ports on the East Coast. In March 1942 when the seas were rife with U-boat torpedoes; freighters moved carefully through the area off the Outer Banks called “Torpedo Junction” due to enemy activity. It was March 18, and *E. M. Clark* was carrying 118,725 barrels of oil aboard and traveling in stormy conditions when the crew experienced a blast. Radio operator Earl Schlarb set up an emergency antenna to send out an SOS, but the explosion of a second torpedo from *U-124* knocked it down. The captain of the tanker ordered abandon ship. They launched the vessel’s lifeboat and moved away from their ship. The crew noticed a man was still on the ship. He had on a life jacket. They watched as he jumped into the sea and pulled him into the lifeboat. They moved through an oil-dense sea as the ship began to go under. Two ships rescued the crew. *USS Dickerson* took on board 14 men, and the Venezuelan tanker *Cataumbo* rescued 26 men. One crew member was missing.

Seen here is a porthole from *E. M. Clark*

WORD SEARCH



EXPLOSION JUNCTION TORPEDO PORTHOLE
 LIFEBOAT ABANDON RADIO RESCUED ANTENNA
 BARRELS CLARK CAPTAIN TANKER JACKET
 OIL SEA SHIP LIFE CREW

1. What kind of tanker was *E. M. Clark*?
2. What was the area called where there was a lot of enemy action?
3. What was *E. M. Clark* carrying?
4. How did *E. M. Clark* sink?
5. How many crew members were rescued?

1. A twin-screw tanker.
2. Torpedo Junction
3. Barrels of oil
4. It was struck by torpedoes.
5. 40

JOKE OF THE MONTH

What kind of insect is found on the beach?

A beach buggy!

